



A HOME AS UNIQUE AS YOU

Each home features a modern, open-concept layout that invites natural light and encourages gatherings, complemented by spacious interiors, elegant finishes, energy-efficient appliances, and built-in smart home technologies. You'll find six floor plans designed to cater to your preferences. Customize your home with upgraded finishes, guest suites, expansive kitchens, and more, ensuring every detail reflects your unique style and comfort.

INCLUDED FEATURES

EXTERIOR FEATURES

- All steel reinforced concrete block construction
- Impact glass windows aluminum clad in bronze
- Pavers on driveway, front path, and rear terrace
- Screens on all operable windows
- Modern steel flush panel wood grain garage door
- Front and rear weatherproof GFI electrical outlets
- Professionally landscaped and sodded homesite
- Automatic multi-zone sprinkler system
- Two conveniently located outside hose bibs
- Decorative shutters, stone or tile (per plan)

KITCHEN FEATURES

- 36" stainless-steel counter depth refrigerator
- 36" electric cooktop
- Built in wall oven with microwave
- Contemporary paneled canopy hood
- Multi-cycle dishwasher
- ½ HP continuous feed garbage disposal
- Kohler® 32" single-bowl undermount sink with accessories
- Upgrade soft close cabinetry in several color choices
- 3/4" quartz countertop with mitered edge
- Full quartz backsplash
- Single lever Kohler® faucet with pull down spray feature

INTERIOR FEATURES

- Volume 12' ceilings in single-story models
- Volume 10' – 11'4" ceilings on the first floor and 9'2" to 9'5" ceilings on the second floor in two-story models (per plan)
- Light textured finish walls & ceilings throughout
- Square cornerbead drywall (excluding all returns, per plan)
- Elegant decorator door hardware throughout
- Square painted post and rail, black balusters on stairs
- Decorative 2 ¼" wood door casings
- Oversized 5 ¼" wood baseboards
- Designer 24" x 24" porcelain tile flooring in all common areas
- State-of-the-art air conditioning system
- Electric water heater
- Wood closet shelving
- Smoke and carbon monoxide detectors (per plan)
- Built-in fire protection system with home sprinklers
- RG6 shielded coaxial television cable in all bedrooms, family rooms, and den/loft (where applicable) home run to a central distribution panel
- Pre-wired for ceiling fans in all bedrooms (per plan)
- Full-sized washer and dryer
- Sink in laundry room
- Gypcrete flooring on second floor
- Overhead recessed lighting in kitchen, terraces, halls, closets and baths (per plan)
- Smart thermostat with remote control function
- Built-in fire protection system with home sprinklers

BATH FEATURES

- Upgrade soft close cabinetry in all bathrooms
- Quartz vanity tops with 4" backsplash
- Designer 12" x 24" porcelain tile on floors and shower walls in primary bath
- Designer 12" x 24" tile on shower walls and floors with 2" x 2" mosaic tile on shower floor in secondary baths (per plan)
- Kohler® faucets
- Elongated water closets
- Vessel sinks in primary bathroom
- Rectangular undermount sinks in all secondary bathrooms
- Exhaust fans (per plan)
- Frameless mirrors over each sink
- Frameless clear glass shower enclosure in primary bath





SANTA BARBARA



Majestic is a one-level estate with 5 bedrooms, 4.5 bathrooms, dining room, living room, family room, kitchen with large island, owner's suite with two walk-in closets, covered terrace, and a 2-car garage.

5-6 BEDROOMS • 4.5-6.5 BATHROOMS • 2-CAR GARAGE
3,719 AC SQ FT • 4,583 TOTAL SQ FT

*Artist's conception and for the convenience of reference. All dimensions are approximate. Developer reserves the right to change and alter materials, specifications, features, dimensions and designs without notice.



MODERN FARMHOUSE

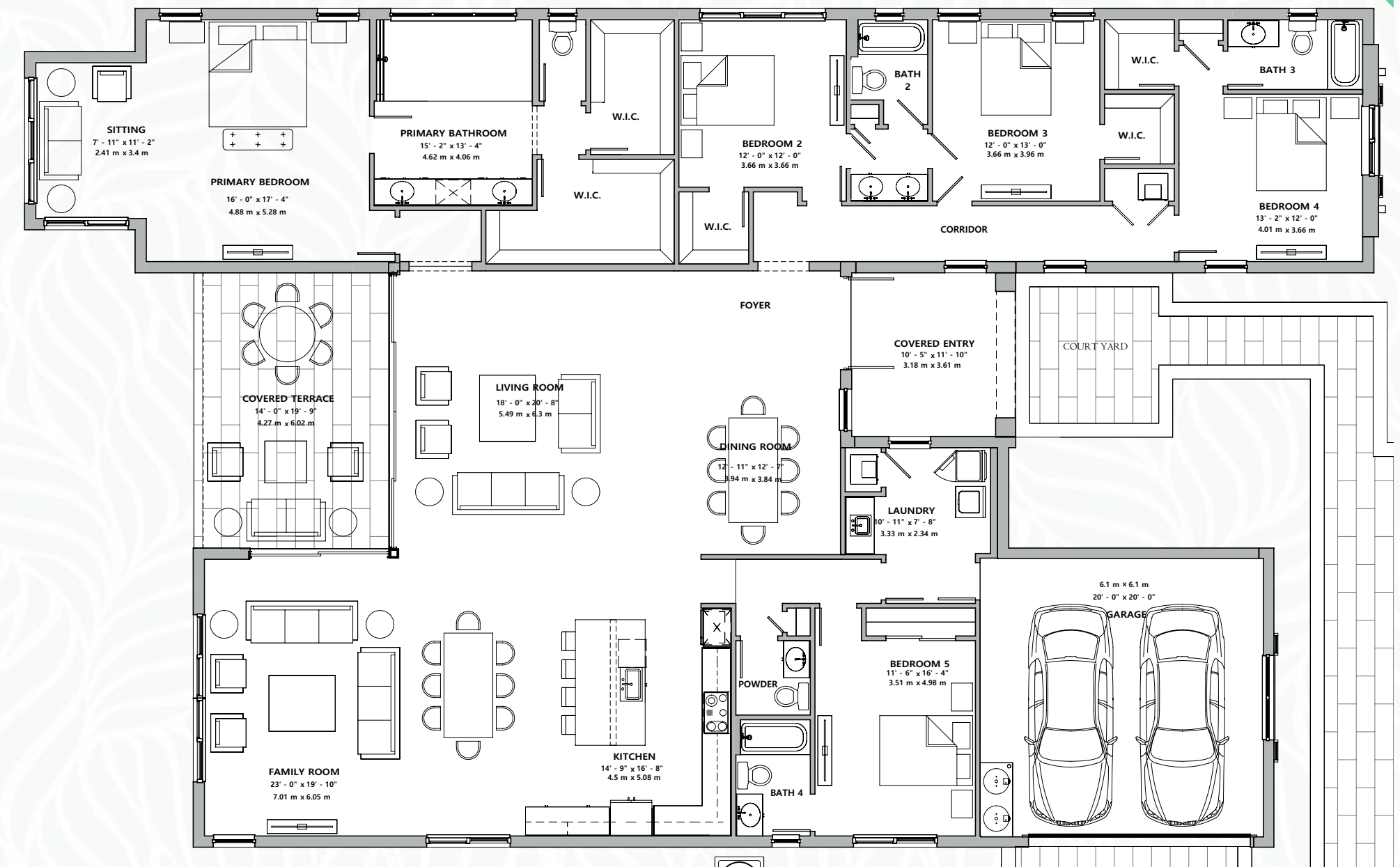


COASTAL

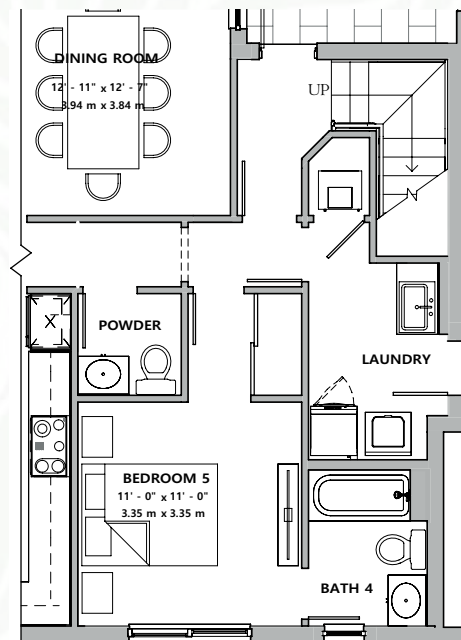


MAJESTIC

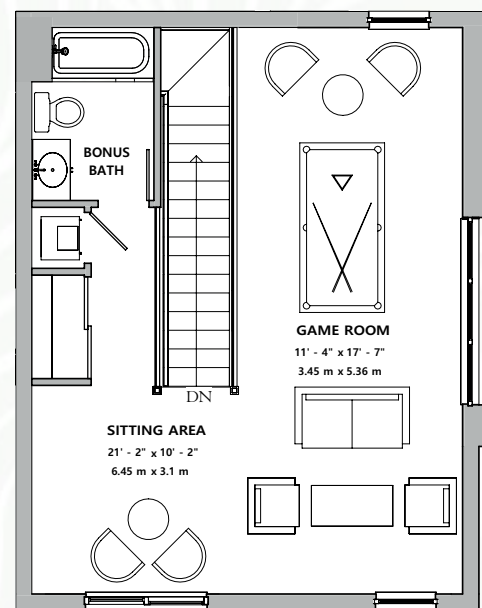
MAIN FLOOR



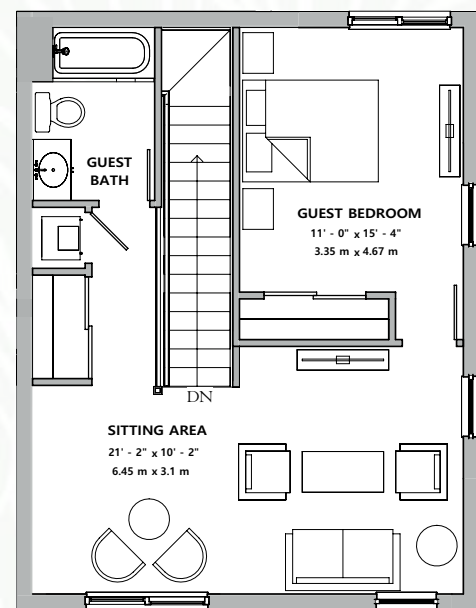
*Artist's conception and for the convenience of reference. All dimensions are approximate. Developer reserves the right to change and alter materials, specifications, features, dimensions and designs without notice.
Coastal elevation shown.



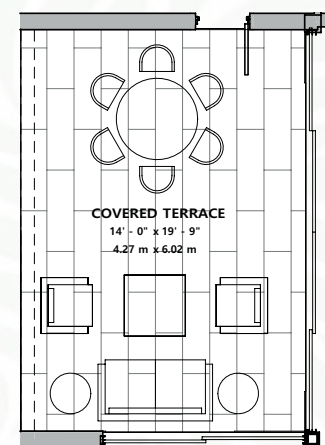
BEDROOM 5 W/ SELECTION OF SECOND FLOOR BONUS ROOM



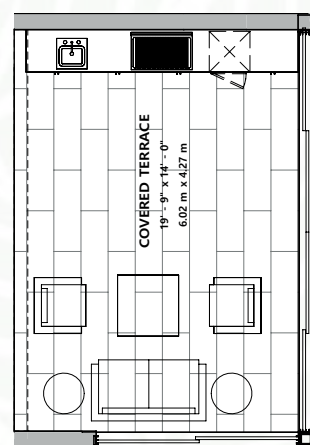
SECOND FLOOR BONUS ROOM W/ GAME ROOM OPTION



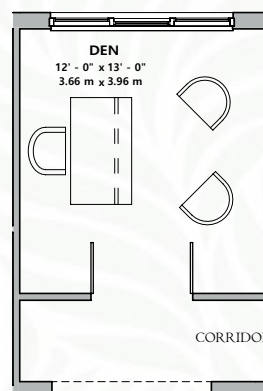
SECOND FLOOR BONUS ROOM W/ BONUS BEDROOM OPTION



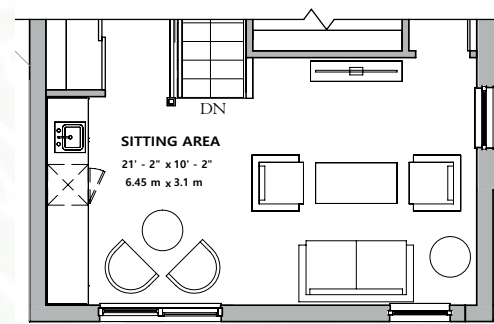
FRENCH DOOR AT PRIMARY BEDROOM



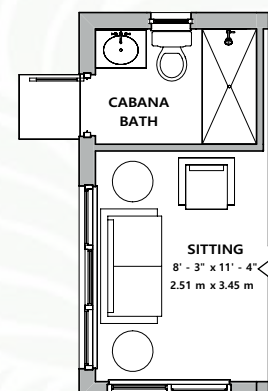
SUMMER KITCHEN AT COVERED TERRACE



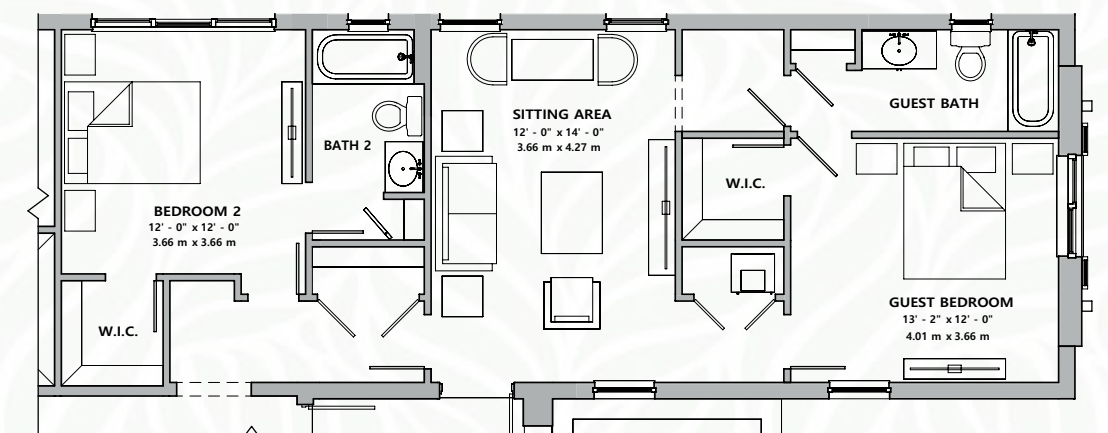
DEN ILO BEDROOM 2



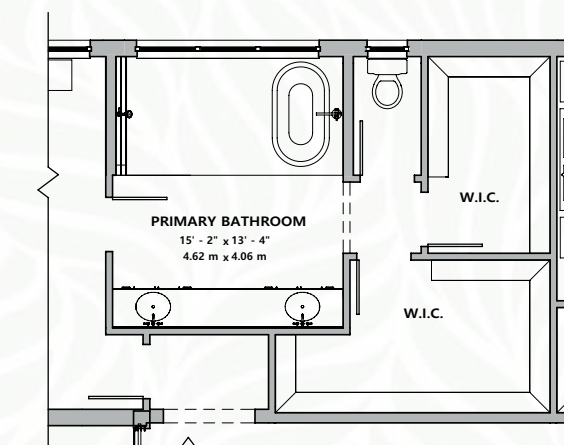
SECOND FLOOR BONUS W/WET BAR AT SITTING AREA



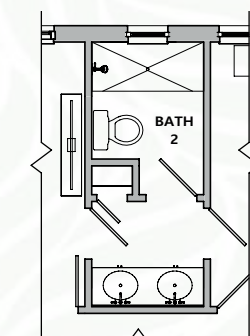
CABANA BATH



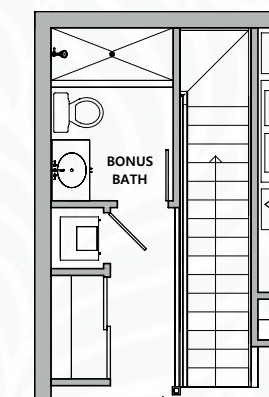
GUEST BEDROOM ILO BEDROOM 3



TUB AT PRIMARY BATH



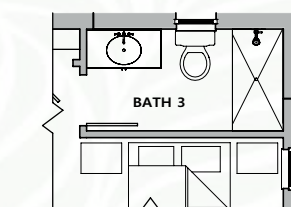
SHOWER ILO TUB @ BATH 2 W/ SELECTION OF STANDARD



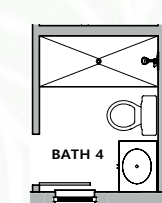
SHOWER ILO TUB AT BONUS ROOM



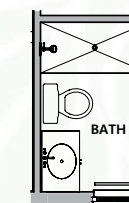
SHOWER ILO TUB @ BATH 2 W/ SELECTION OF GUEST BEDROOM



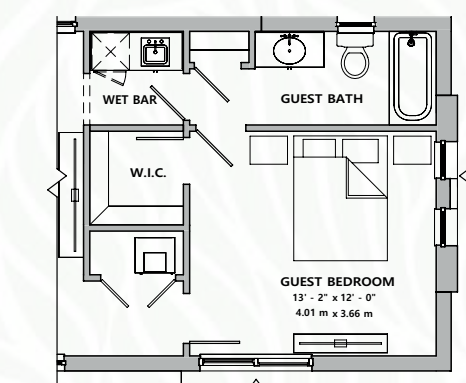
SHOWER ILO TUB AT BATH 3



SHOWER ILO TUB AT BATH 4 (BONUS)



SHOWER ILO TUB AT BATH 4 (STD)



WET BAR AT GUEST BEDROOM



MAJESTIC OPTIONS

*Artist's conception and for the convenience of reference. All dimensions are approximate. Developer reserves the right to change and alter materials, specifications, features, dimensions and designs without notice.
Coastal elevation shown.



MODERN FARMHOUSE



COASTAL



SANTA BARBARA



As functional as it is impressive, the Oasis features 6 to 8 bedrooms and 6.5 bathrooms spread over two levels, including, an eat-in kitchen with large island and pantry, dining room, living room, family room, loft, owner's suite with sitting room, two walk-in closets, covered terrace, and a 2-car garage.

6-8 BEDROOMS • 6.5 BATHROOMS • 2-CAR GARAGE
5,950 AC SQ FT • 7,082 TOTAL SQ FT

*Artist's conception and for the convenience of reference. All dimensions are approximate. Developer reserves the right to change and alter materials, specifications, features, dimensions and designs without notice.

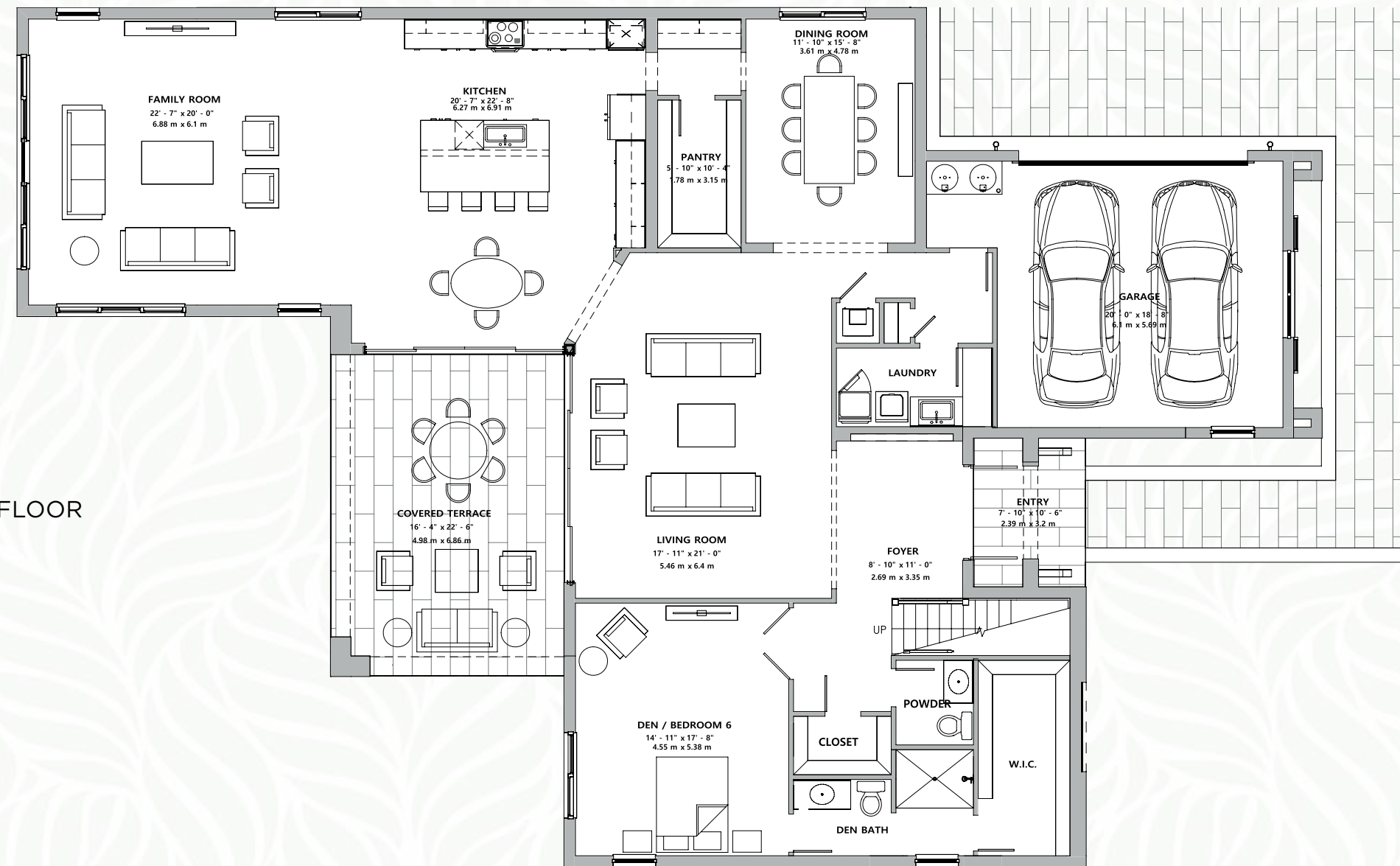


PREVIOUS BUILD: BATHROOM



PREVIOUS BUILD: KITCHEN

1st FLOOR



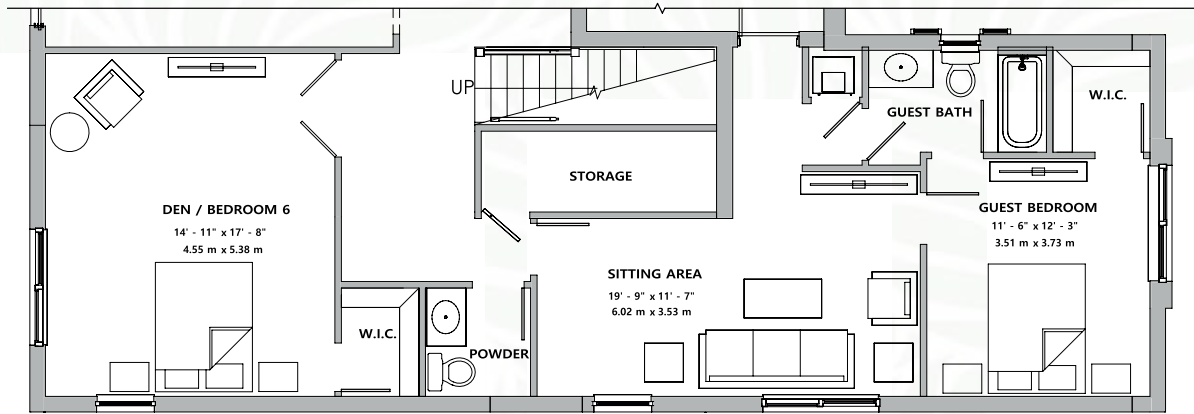
2ND FLOOR



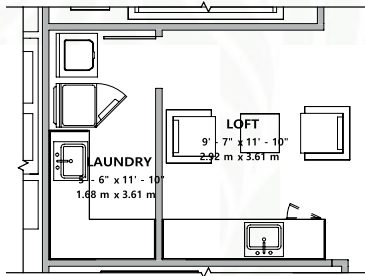
*Artist's conception and for the convenience of reference. All dimensions are approximate. Developer reserves the right to change and alter materials, specifications, features, dimensions and designs without notice.
Coastal elevation shown.



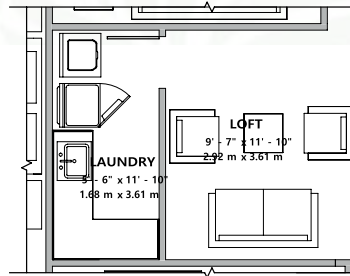
OASIS



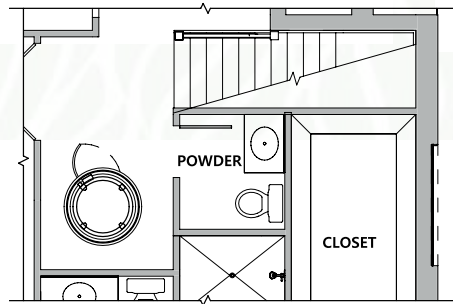
GUEST BEDROOM OPTION



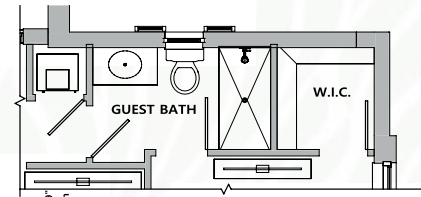
SECOND FLOOR PLAN LAUNDRY + WET BAR



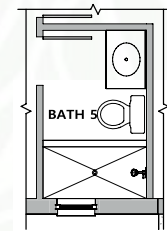
SECOND FLOOR PLAN LAUNDRY OPTION



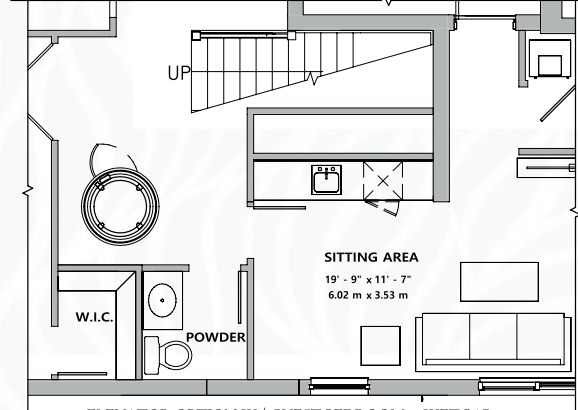
ELEVATOR OPTION STANDARD



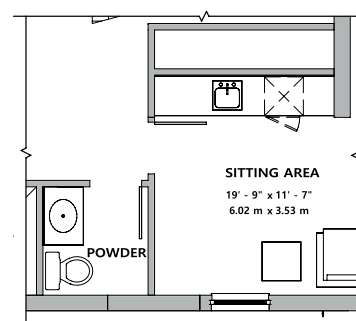
SHOWER ILO TUB AT GUEST BEDROOM OPTION



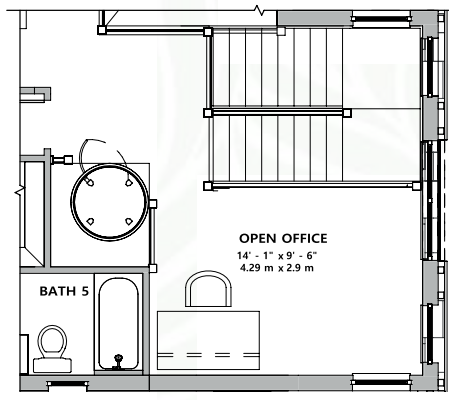
SHOWER ILO TUB AT BATH 5



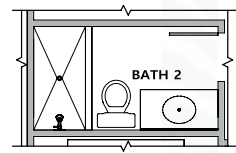
ELEVATOR OPTION W/ GUEST BEDROOM & WET BAR



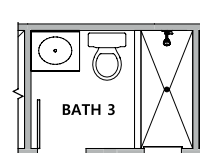
WET BAR AT GUEST BEDROOM OPTION



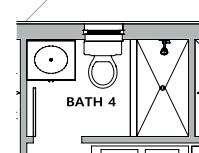
SECOND FLOOR PLAN ELEVATOR OPTION STANDARD



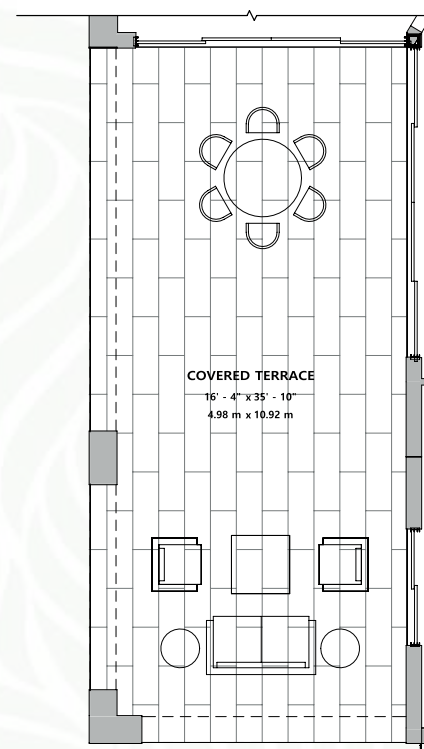
SHOWER ILO TUB AT BATH 2



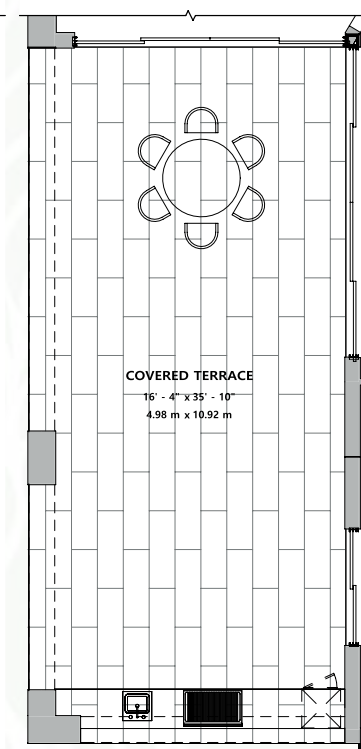
SHOWER ILO TUB AT BATH 3



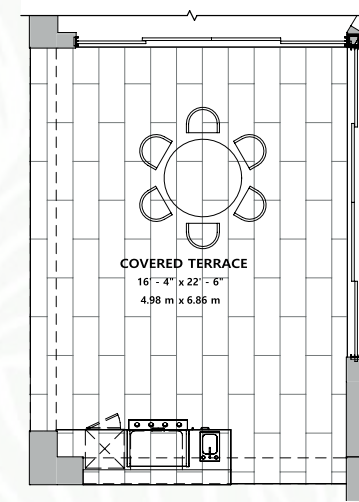
SHOWER ILO TUB AT BATH 4



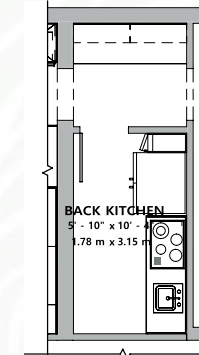
EXTENDED COVERED TERRACE



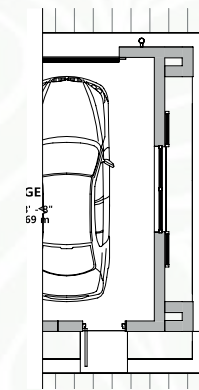
SUMMER KITCHEN AT EXTENDED COVERED TERRACE



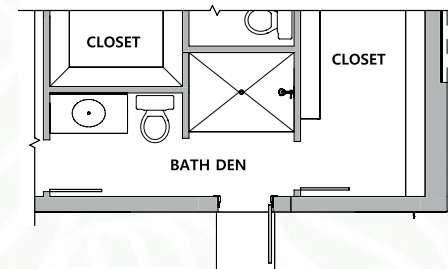
SUMMER KITCHEN AT STANDARD TERRACE



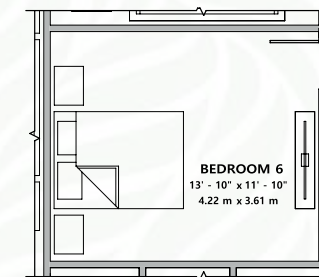
BACK KITCHEN



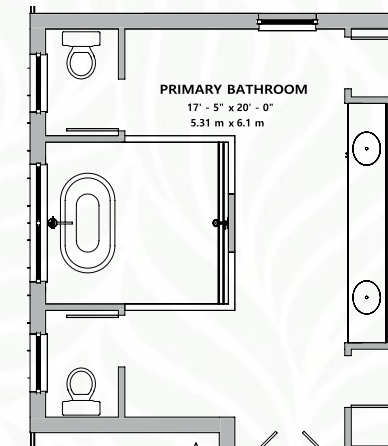
DOOR SIDE AT SIDE GARAGE



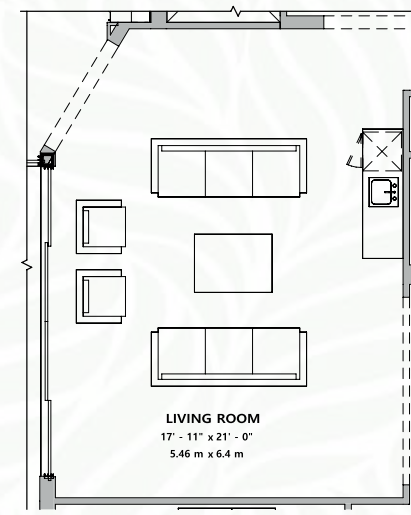
DOOR AT BATH DEN



BEDROOM 6 OPTION IN LIEU OF LOFT



TUB AT PRIMARY BATHROOM



WET BAR AT LIVING ROOM



OASIS OPTIONS

*Artist's conception and for the convenience of reference. All dimensions are approximate. Developer reserves the right to change and alter materials, specifications, features, dimensions and designs without notice.
Coastal elevation shown.



COASTAL



MODERN FARMHOUSE



SANTA BARBARA



SARATOGA

Saratoga, features 6 bedrooms and 6 bathrooms spread over two levels, perfect for entertaining. Within the home's main level are a great room, dining room, kitchen with large pantry, game room, gym, bedroom, and office or den. Second level features a loft, primary bedroom with two walk-in closets, plus secondary bedrooms each with a walk-in closet and en-suite bathroom. Other features include a covered terrace, and a 3-car garage.

6 BEDROOMS • 6 BATHROOMS • 3 TO 4-CAR GARAGE
5,662 AC SQ FT • 6,841 TOTAL SQ FT

*Artist's conception and for the convenience of reference. All dimensions are approximate. Developer reserves the right to change and alter materials, specifications, features, dimensions and designs without notice.



SECOND FLOOR

PRIMARY BEDROOM
21' - 0" x 14' - 3"
6.4 m x 4.34 m

LOFT
18' - 5" x 16' - 0"
5.61 m x 4.88 m

LAUNDRY
14' - 5" x 6' - 0"
4.39 m x 1.83 m

BATH 2

W.I.C.

BEDROOM 2
14' - 5" x 14' - 9"
4.39 m x 4.5 m

W.I.C.

BATH 3

W.I.C.

BEDROOM 3
13' - 0" x 14' - 8"
3.96 m x 4.47 m

W.I.C.

BATH 4

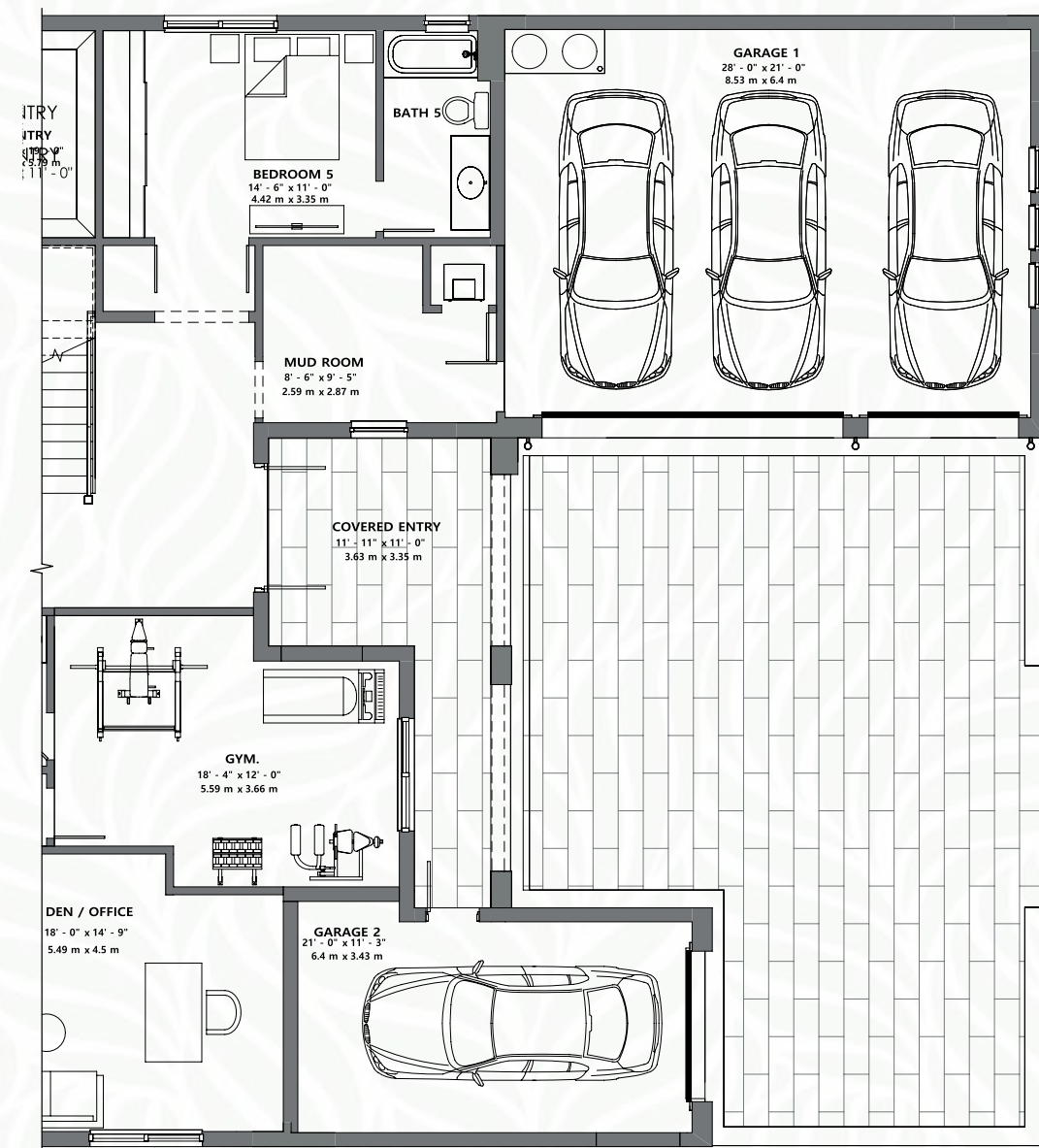
W.I.C.

BEDROOM 4
13' - 10" x 12' - 0"
4.22 m x 3.66 m

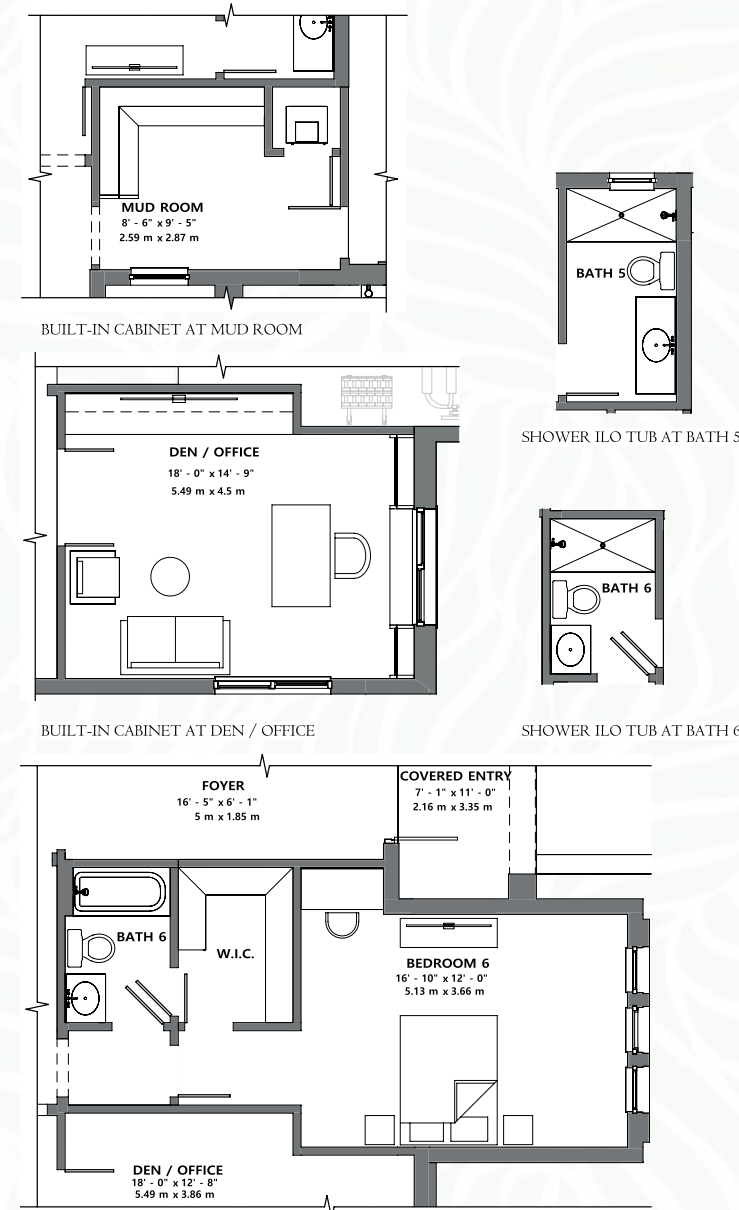
PRIMARY BATH
13' - 10" x 20' - 10 13/32"
4.22 m x 6.36 m

OPEN TO BELOW

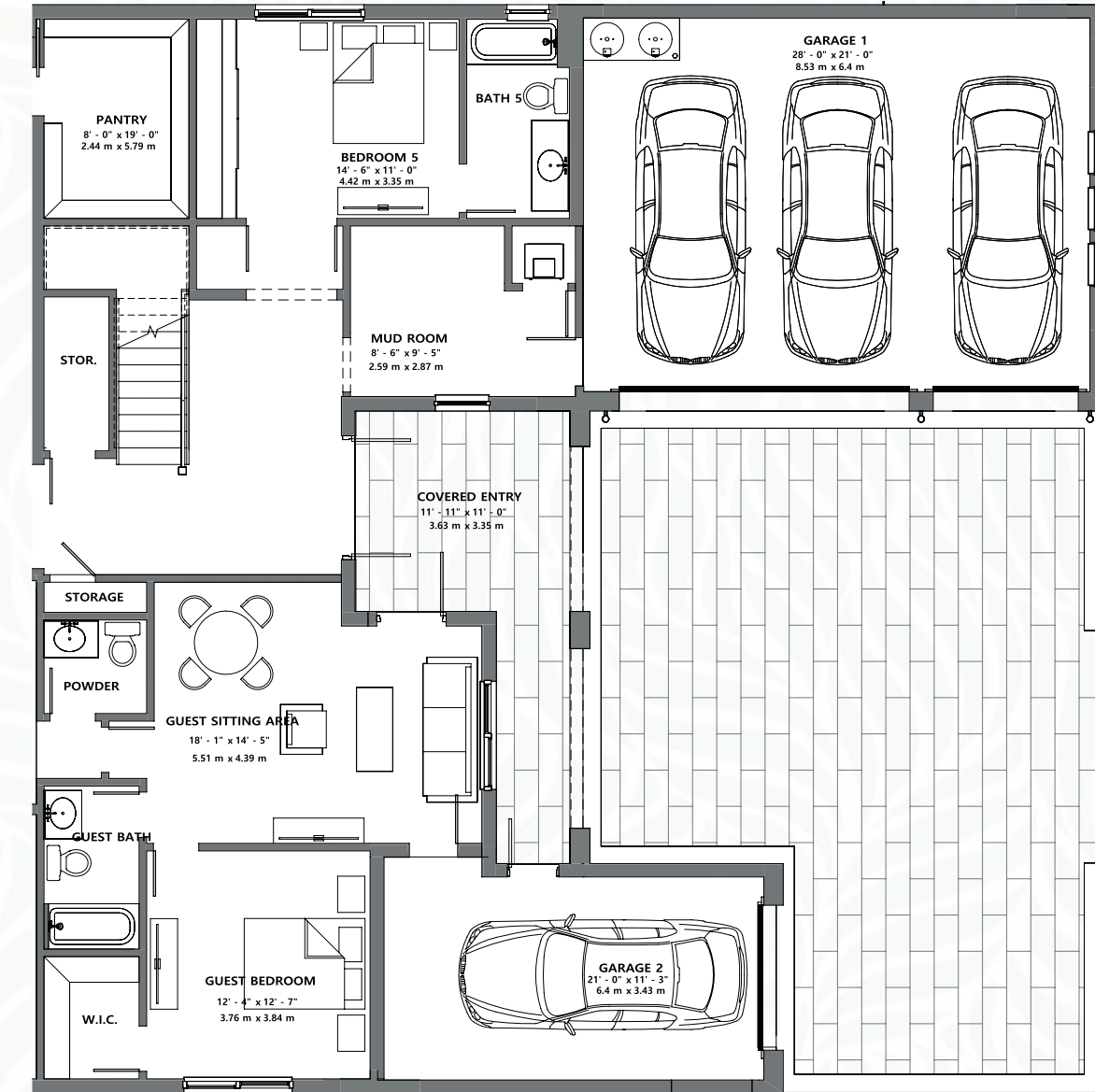
*Artist's conception and for the convenience of reference. All dimensions are approximate. Developer reserves the right to change and alter materials, specifications, features, dimensions and designs without notice.
Coastal elevation shown.



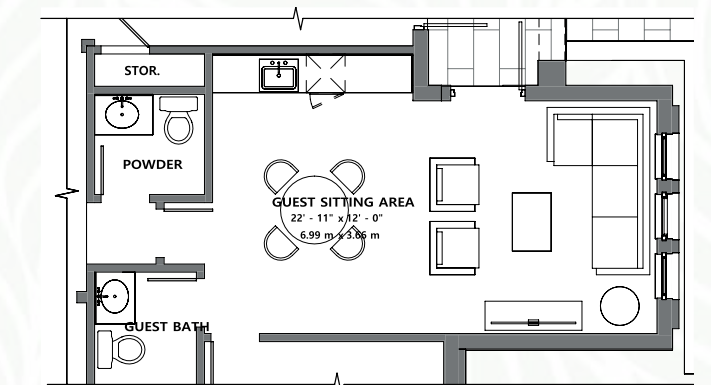
FIRST FLOOR W/4 CAR GARAGE



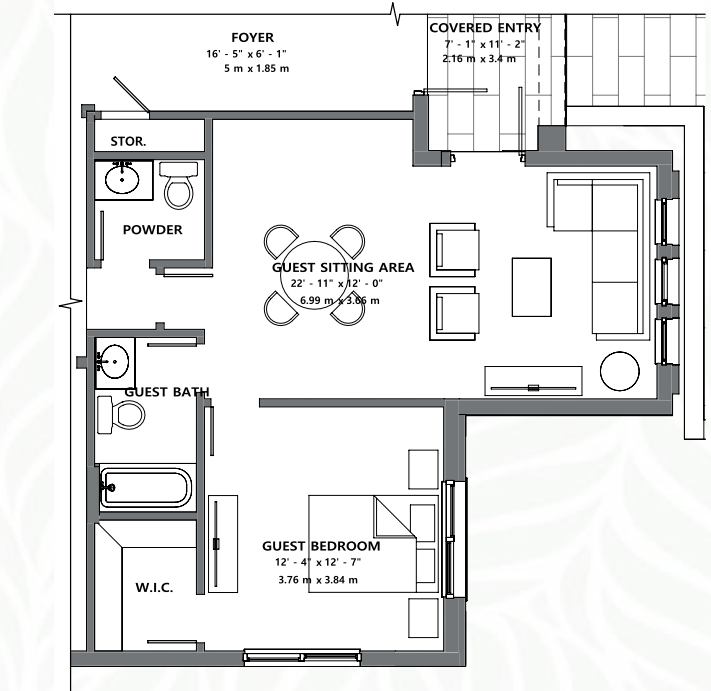
FIRST FLOOR 6TH BEDROOM



FIRST FLOOR GUEST BEDROOM W/ 4 CAR GARAGE



GUEST BEDROOM W/ WET BAR

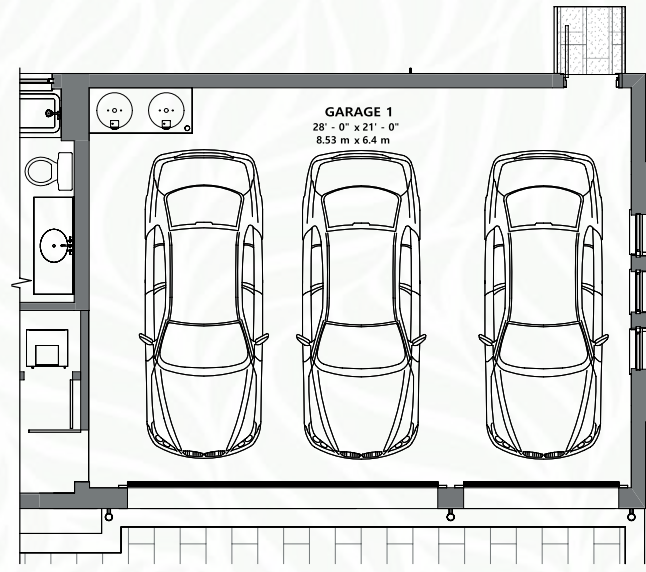
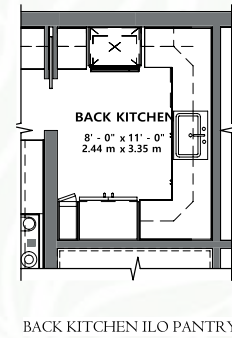
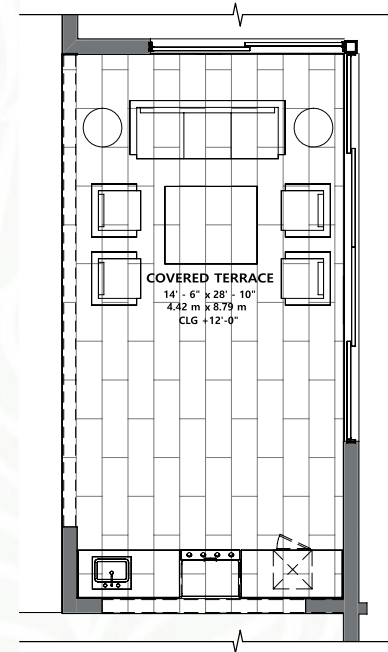
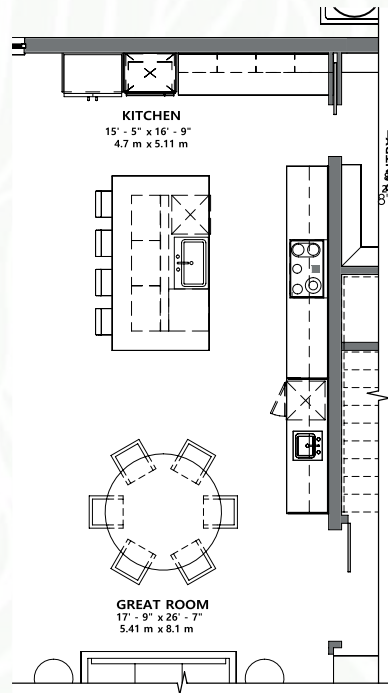
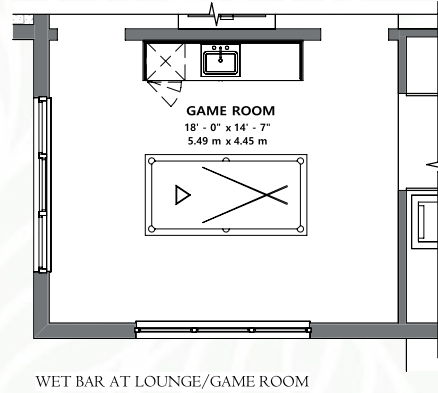
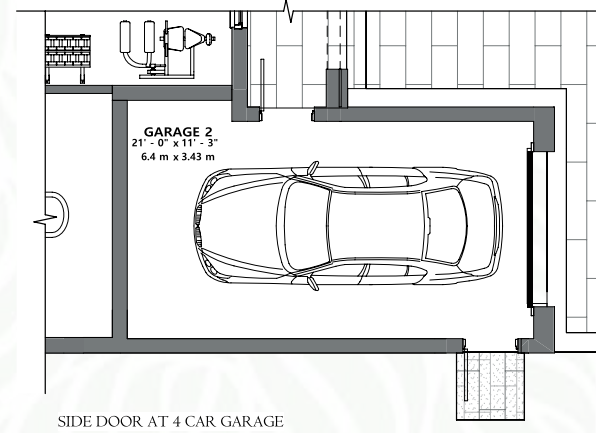
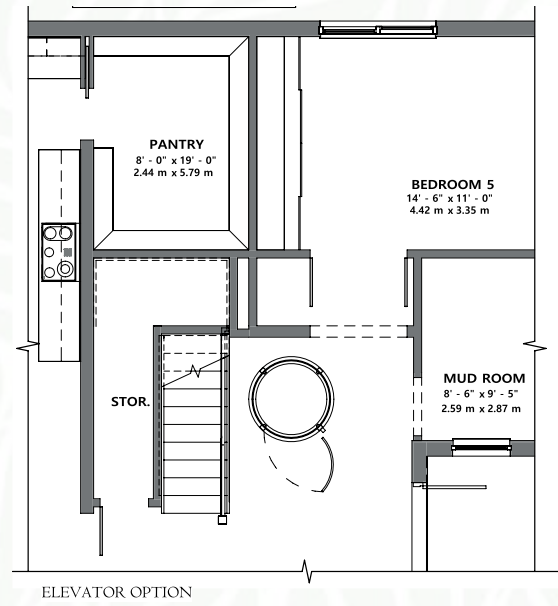


FIRST FLOOR GUEST BEDROOM W/ 3 CAR GARAGE



SARATOGA OPTIONS

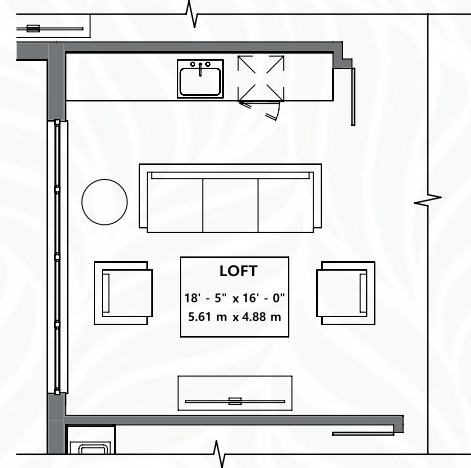
*Artist's conception and for the convenience of reference. All dimensions are approximate. Developer reserves the right to change and alter materials, specifications, features, dimensions and designs without notice.
Coastal elevation shown.



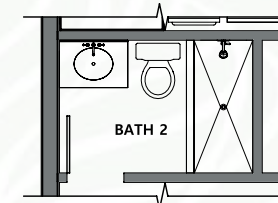
SIDE DOOR AT 3 CAR GARAGE

WET BAR AT GREAT ROOM

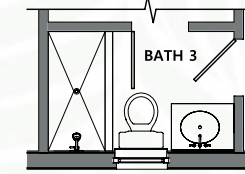
SUMMER KITCHEN AREA AT COVERED TERRACE



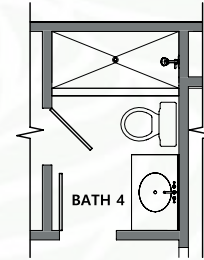
SECOND FLOOR WET BAR @ LOFT



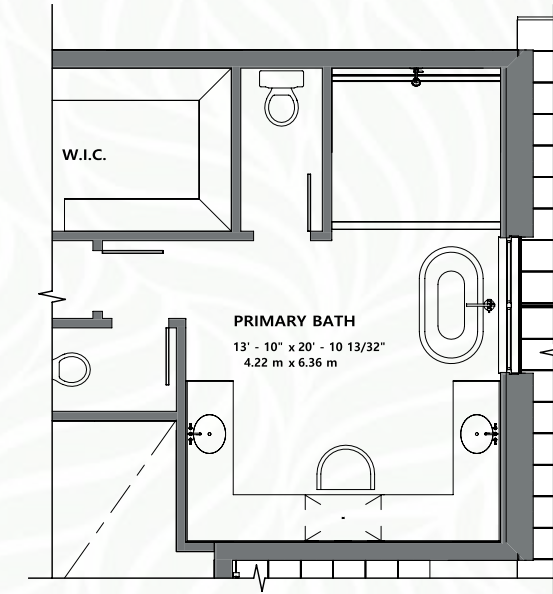
BR-SHOWER I/O TUB AT BATH 2



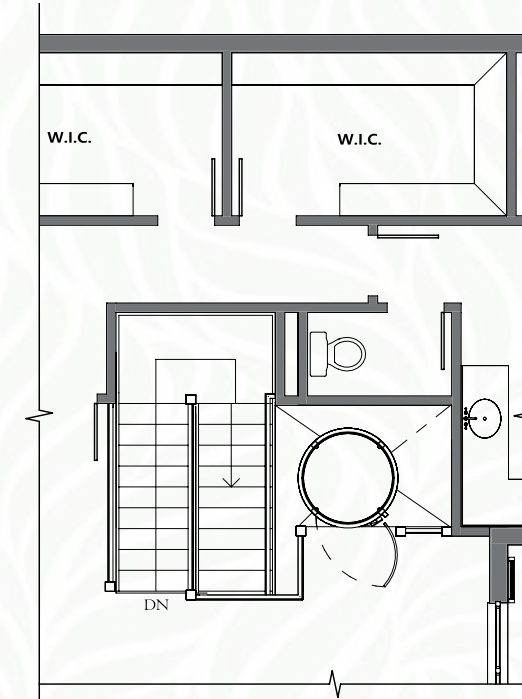
BR-SHOWER I/O TUB AT BATH 3



BR-SHOWER I/O TUB AT BATH 4



PRIMARY BATHROOM W/TUB



SECOND FLOOR ELEVATOR OPTION



SARATOGA OPTIONS

*Artist's conception and for the convenience of reference. All dimensions are approximate. Developer reserves the right to change and alter materials, specifications, features, dimensions and designs without notice.
Coastal elevation shown.



SANTA BARBARA



MODERN FARMHOUSE



COASTAL



JUBILEE

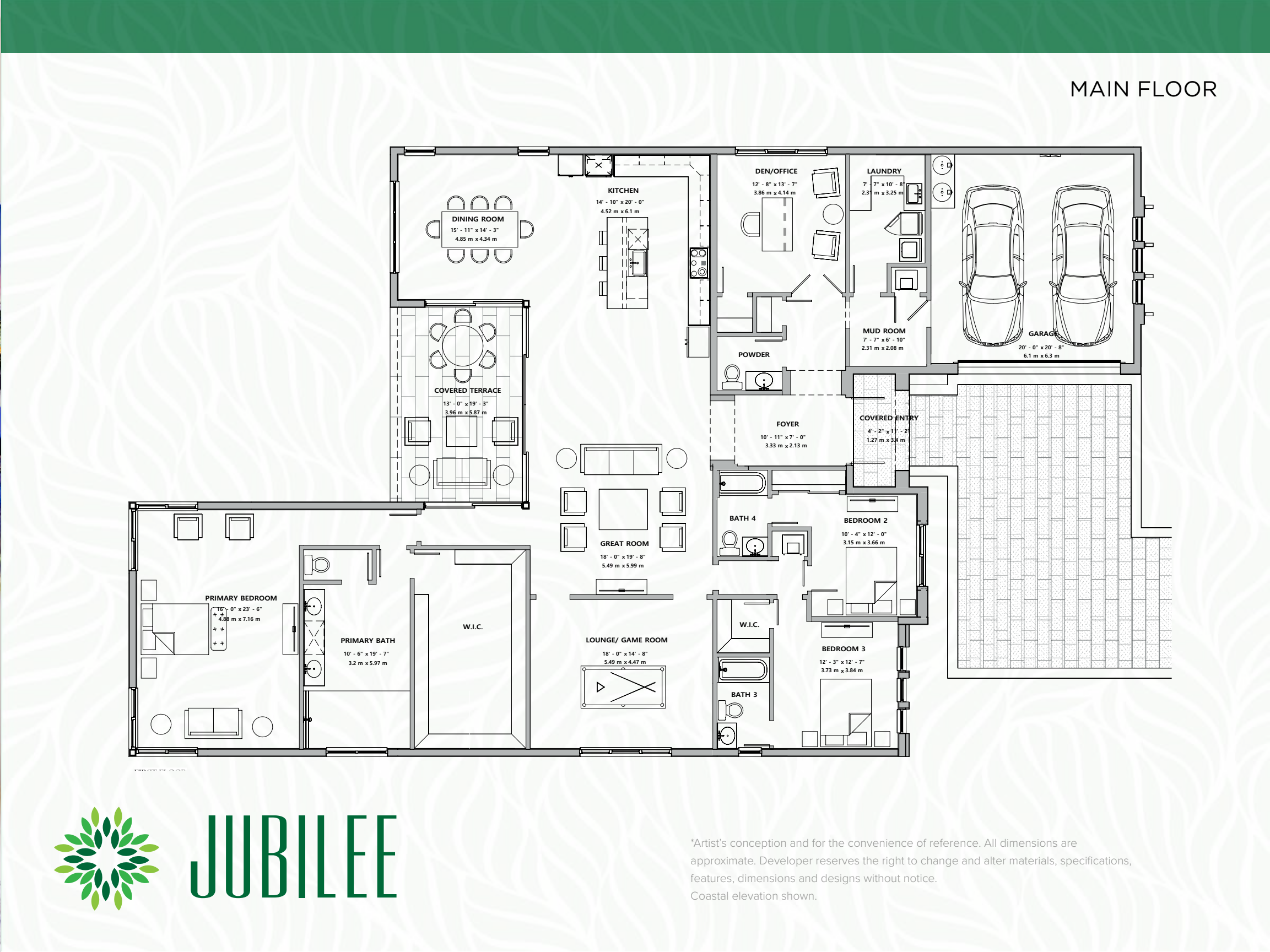
Jubilee is a one-story estate with 3 to 5 bedrooms, 3.5 bathrooms, open-concept great room and eat-in kitchen with large island, owner's suite with walk-in closet and primary bath with grand shower, covered terrace, and a 2-car garage.

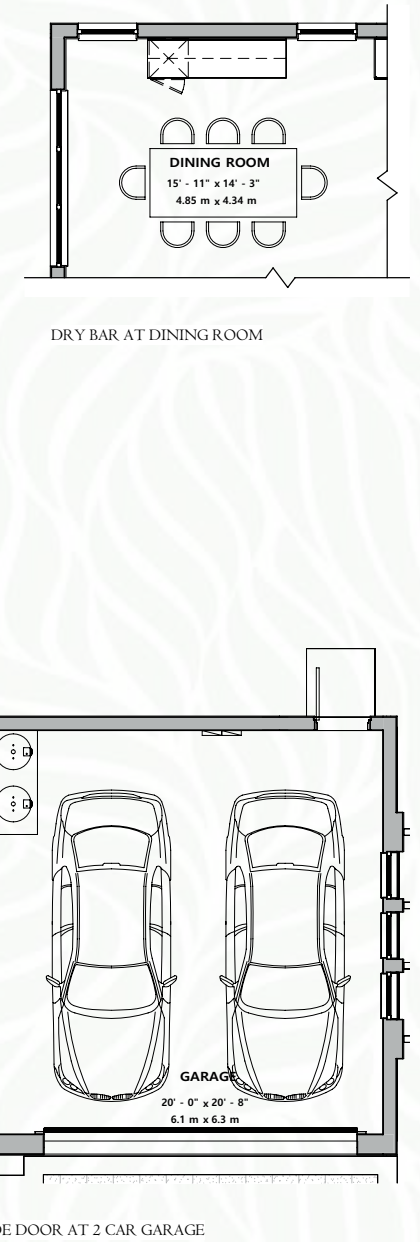
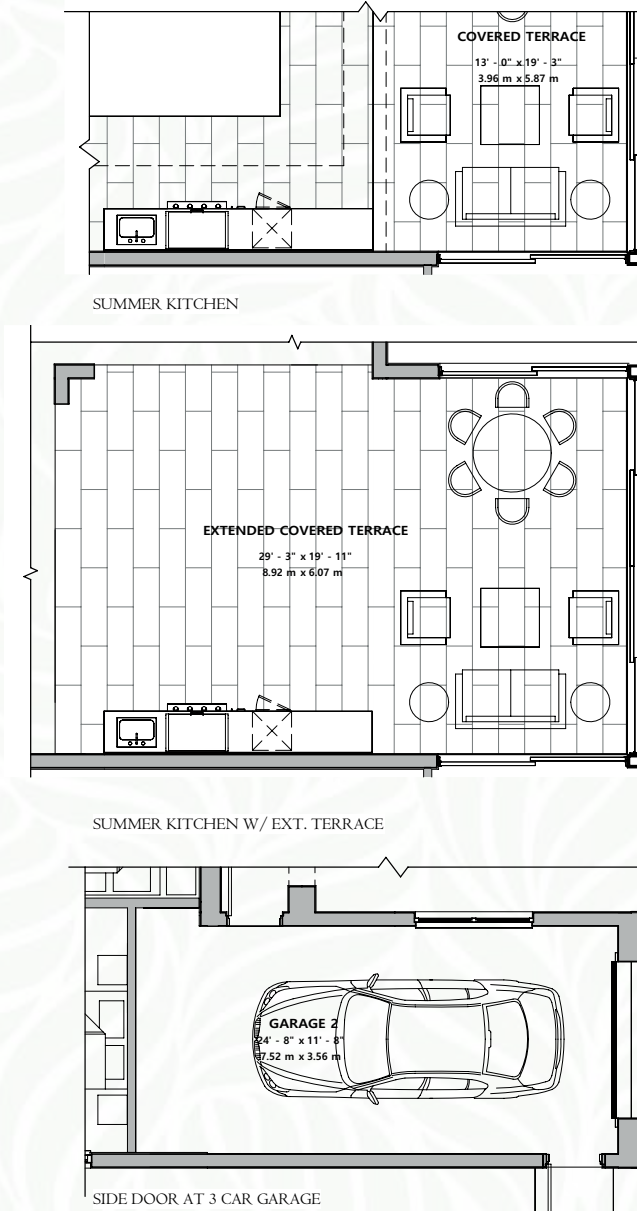
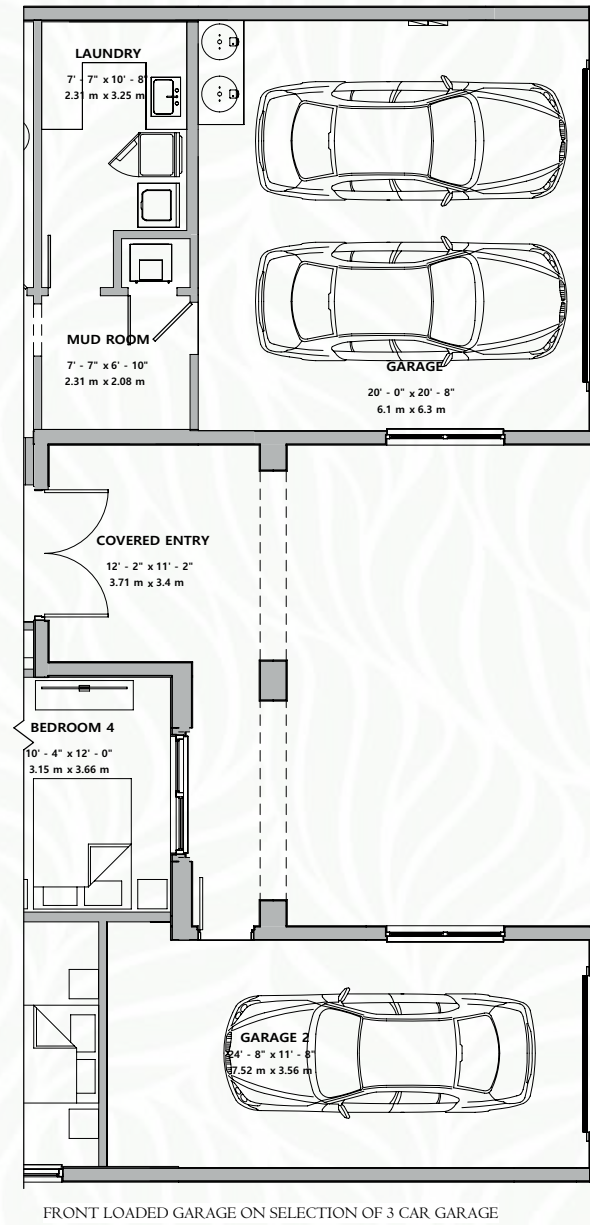
3-5 BEDROOMS • 3.5 TO 5 BATHROOMS • 2 TO 3-CAR GARAGE
3,462 AC SQ FT • 4,234 TOTAL SQ FT

*Artist's conception and for the convenience of reference. All dimensions are approximate. Developer reserves the right to change and alter materials, specifications, features, dimensions and designs without notice.



PREVIOUS BUILD: MODEL OFFICE





JUBILEE OPTIONS

*Artist's conception and for the convenience of reference. All dimensions are approximate. Developer reserves the right to change and alter materials, specifications, features, dimensions and designs without notice.
Coastal elevation shown.



SANTA BARBARA



KINSHIP

Inviting, impressive and warm, these are the words that best describe the Kinship floor plan. With its sprawling two-story design, there are spaces for each family member and guest to delight in inspired design and comfort.

5 BEDROOMS + DEN • 6.5 TO 7.5 BATHROOMS • 4-CAR GARAGE
5,616 AC SQ FT • 7,204 TOTAL SQ FT

*Artist's conception and for the convenience of reference. All dimensions are approximate. Developer reserves the right to change and alter materials, specifications, features, dimensions and designs without notice.

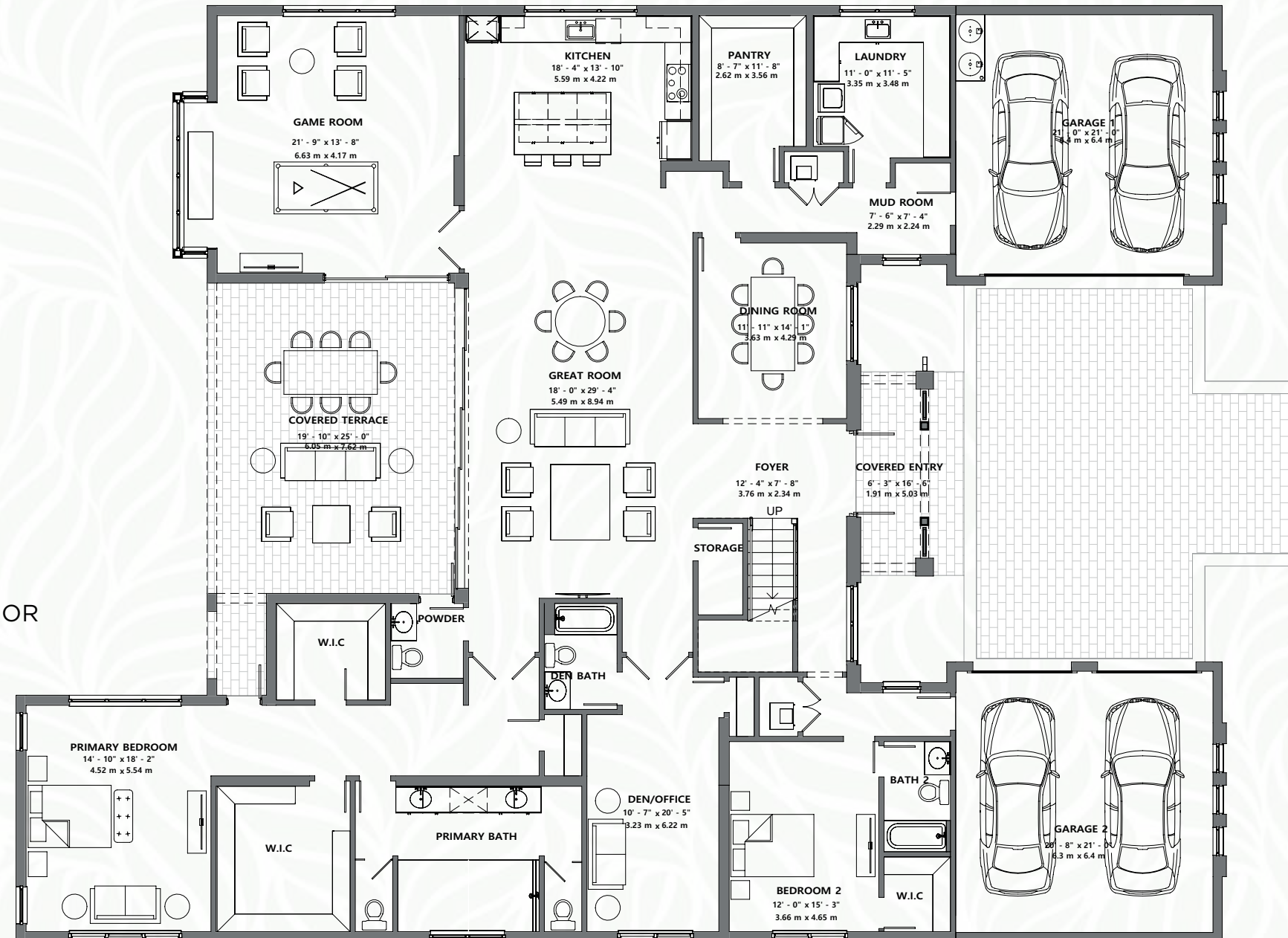


MODERN FARMHOUSE



COASTAL

1st FLOOR



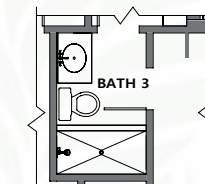
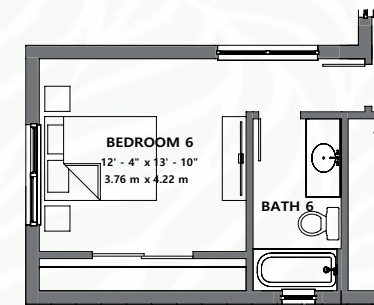
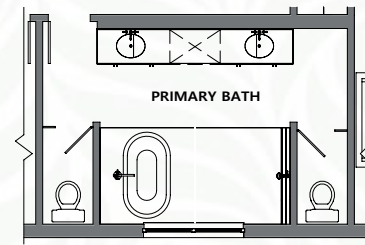
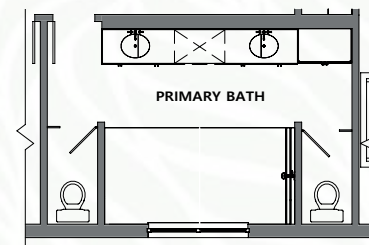
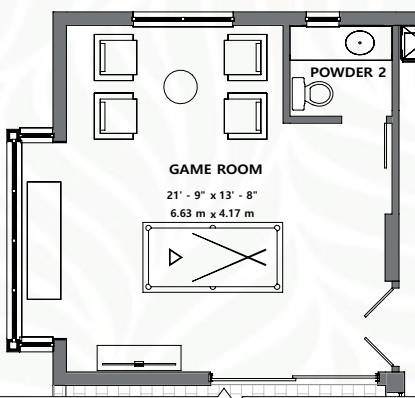
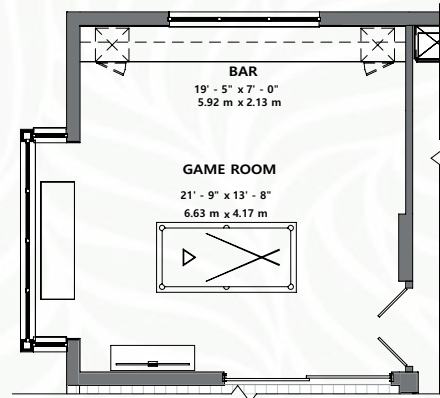
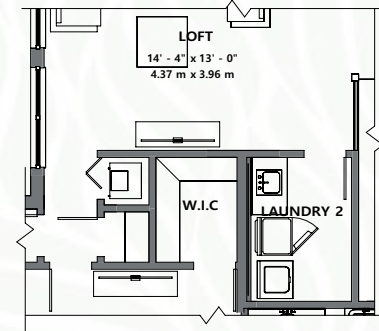
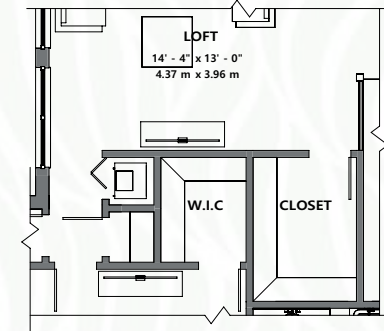
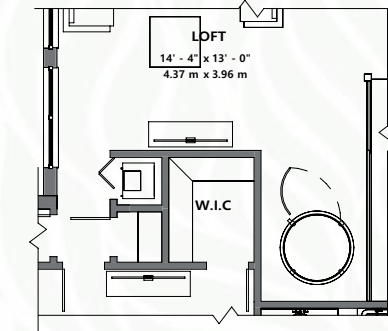
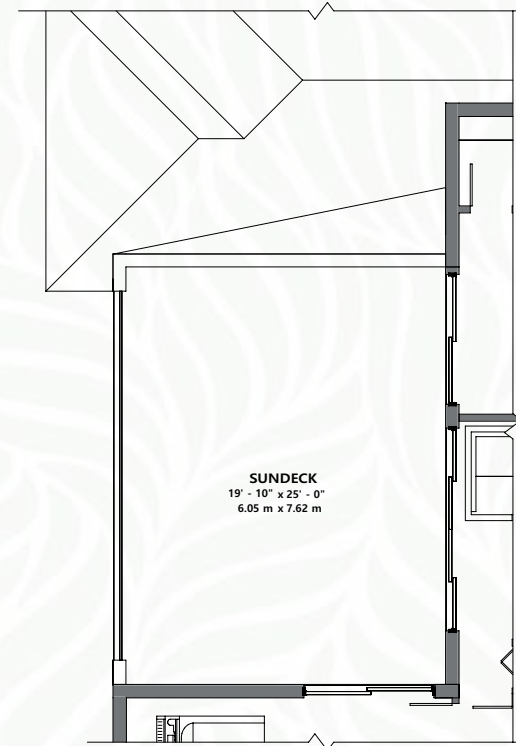
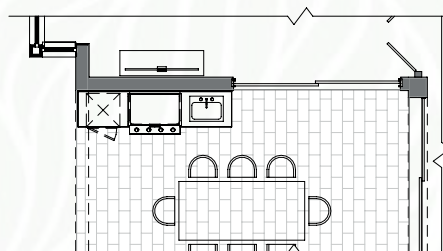
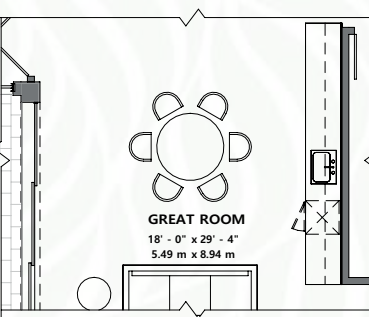
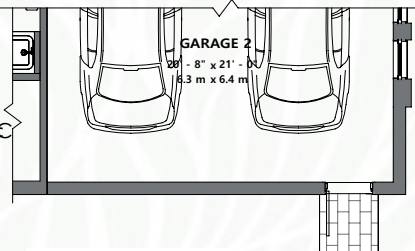
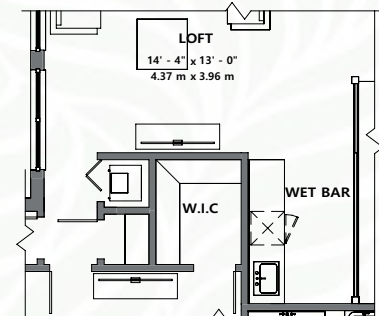
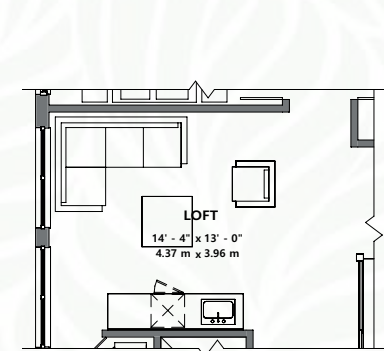
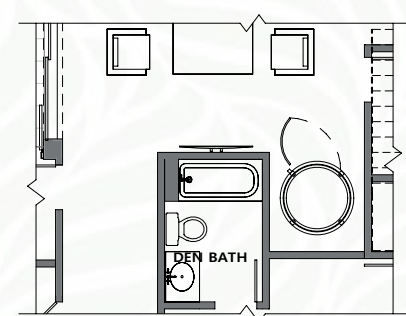
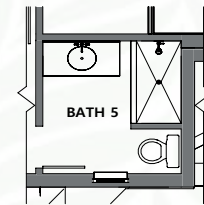
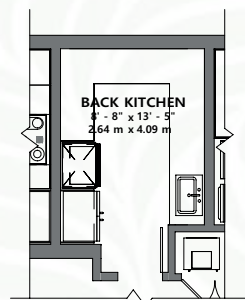
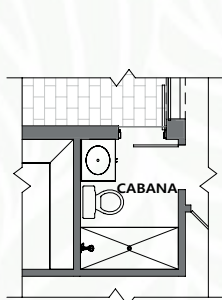
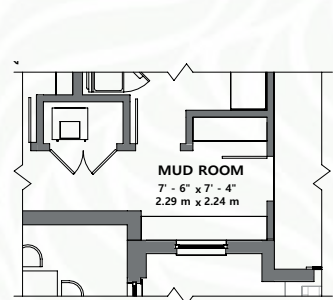
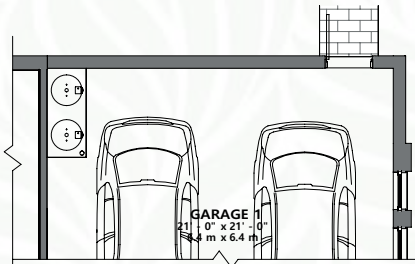
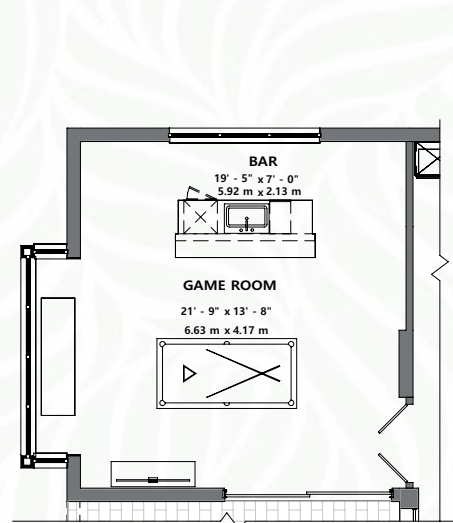
2ND FLOOR



*Artist's conception and for the convenience of reference. All dimensions are approximate. Developer reserves the right to change and alter materials, specifications, features, dimensions and designs without notice.
Coastal elevation shown.



KINSHIP



KINSHIP OPTIONS

*Artist's conception and for the convenience of reference. All dimensions are approximate. Developer reserves the right to change and alter materials, specifications, features, dimensions and designs without notice.
Coastal elevation shown.



SANTA BARBARA



LONGINES

Living is exquisite in the Longines home, with it's stunning foyer, as well as walk-in kitchen pantry for ample storage. Dual garages and thoughtful details throughout create a perfect blend of comfort and functionality.

4 BEDROOMS + OFFICE • 4.5 BATHROOMS • 3-CAR GARAGE
4,279 AC SQ FT • 5,832 TOTAL SQ FT

*Artist's conception and for the convenience of reference. All dimensions are approximate. Developer reserves the right to change and alter materials, specifications, features, dimensions and designs without notice.



MODERN FARMHOUSE

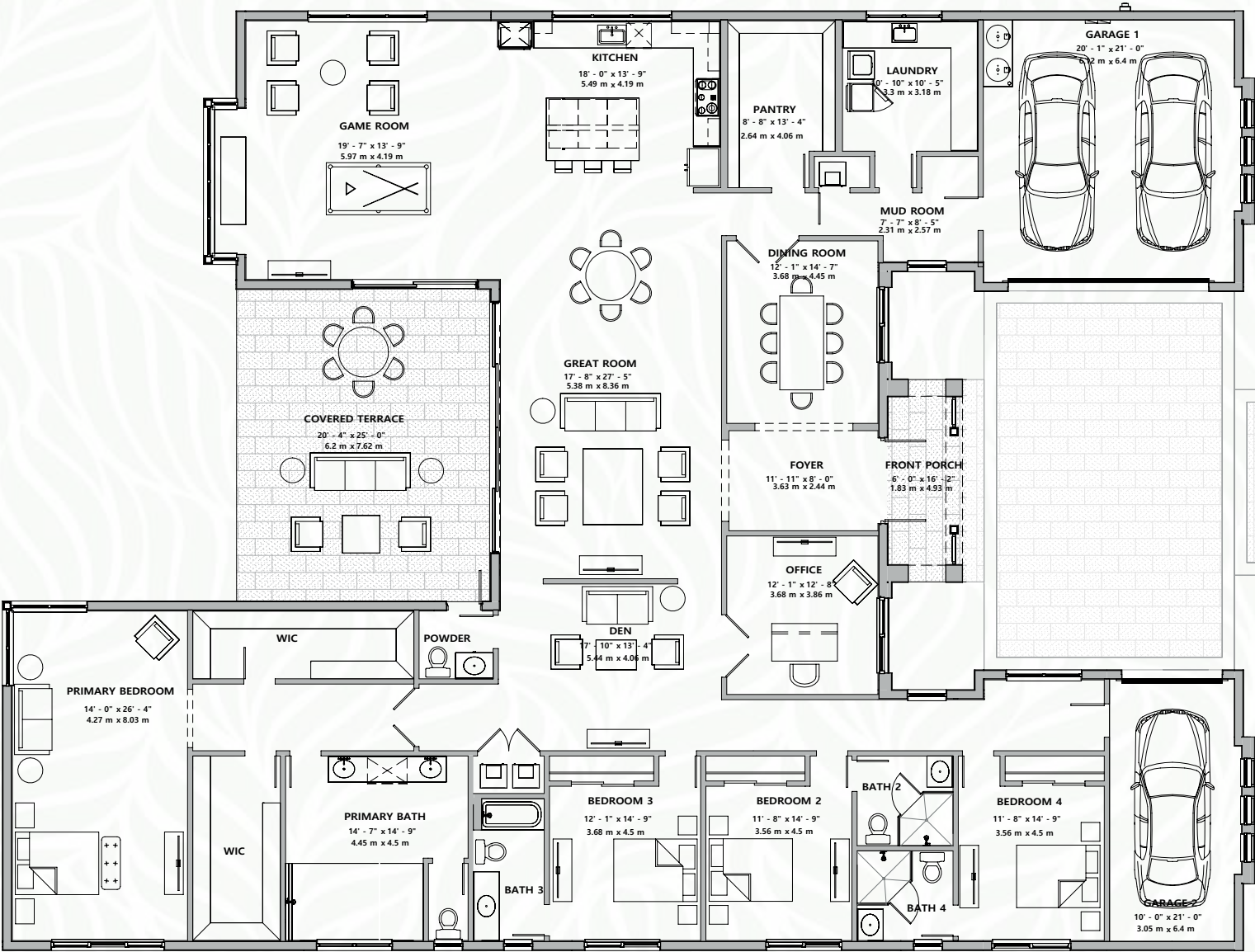


COASTAL



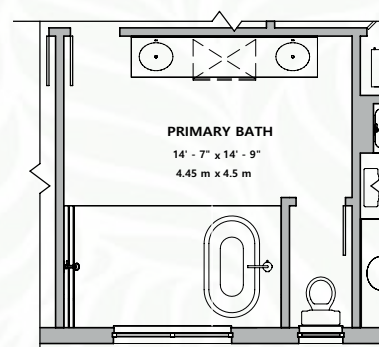
PREVIOUS BUILD: DERBY MODEL

MAIN FLOOR

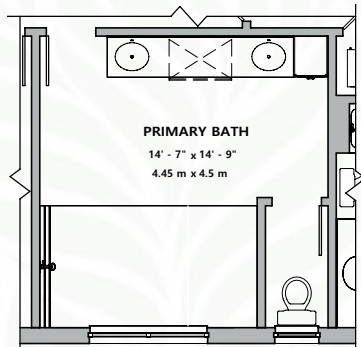


LONGINES

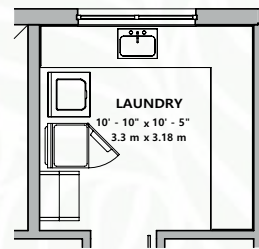
*Artist's conception and for the convenience of reference. All dimensions are approximate. Developer reserves the right to change and alter materials, specifications, features, dimensions and designs without notice.
Coastal elevation shown.



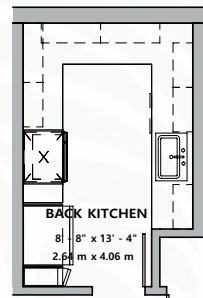
TUB AT PRIMARY BATH



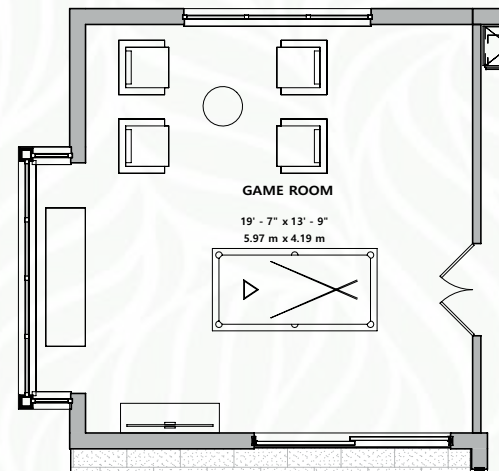
BUILT-IN AT
PRIMARY BATHROOM



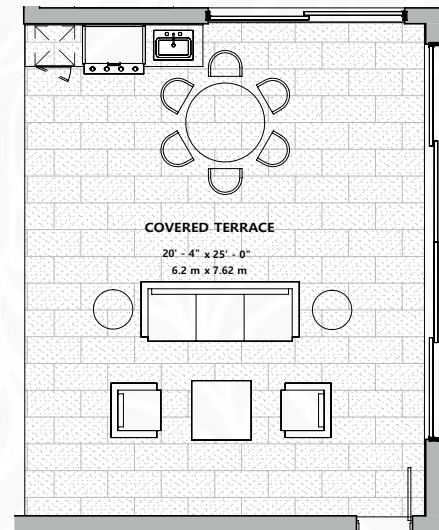
OPTIONAL BUILT IN AT LAUNDRY



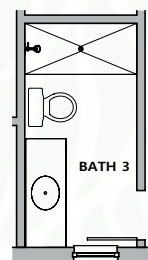
BACK KITCHEN ILO PANTRY



DOOR BETWEEN GAME ROOM/KITCHEN



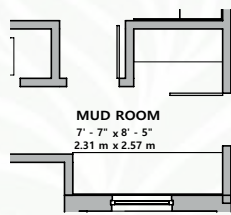
SUMMER KITCHEN



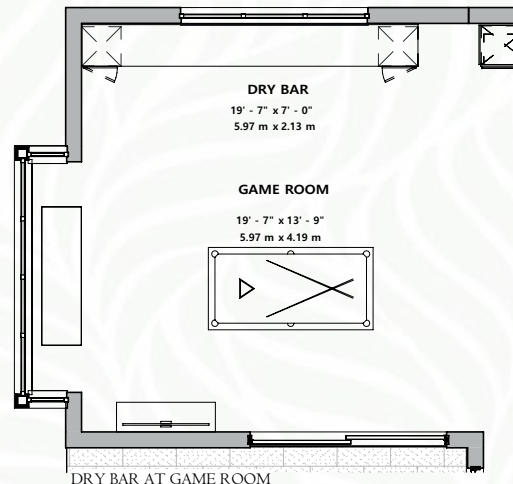
SHOWER ILO TUB
AT BATH 3



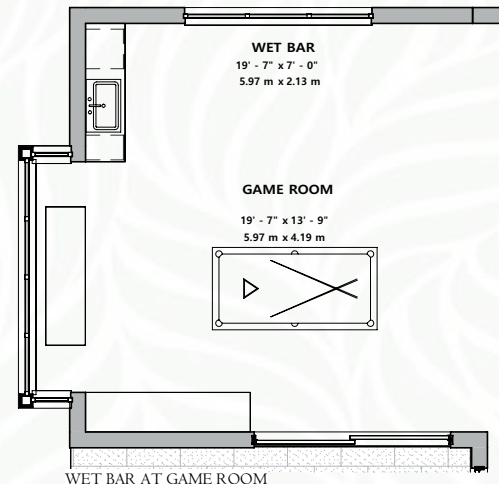
SHOWER ILO TUB
AT GUEST BATH



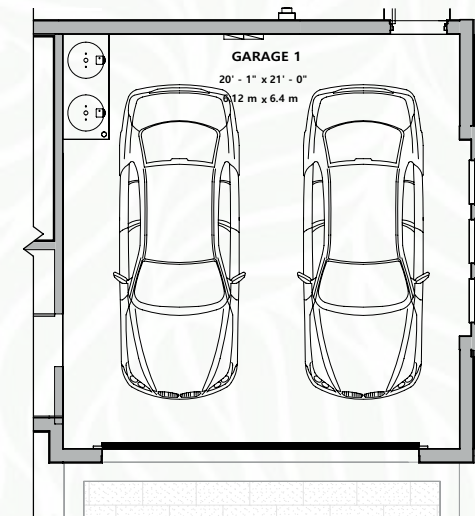
BUILT-IN AT MUD ROOM



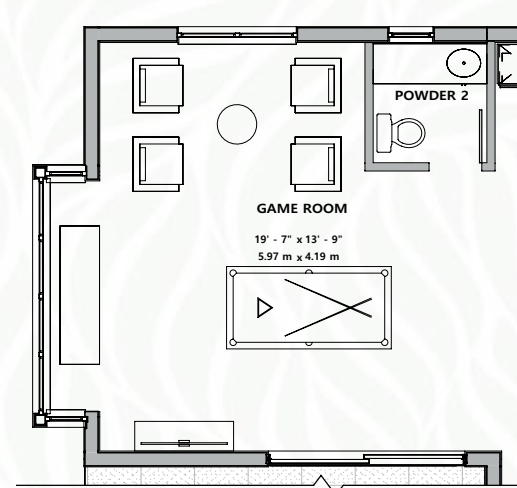
DRY BAR AT GAME ROOM



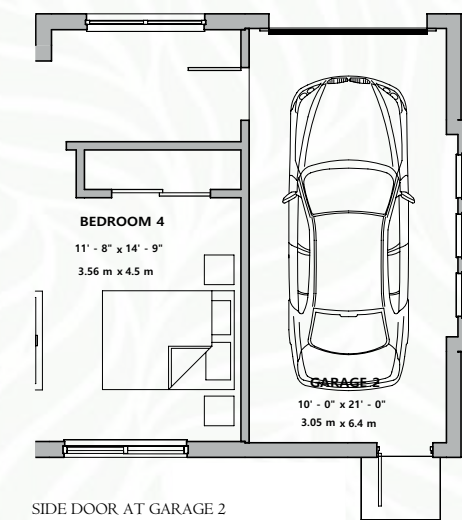
WET BAR AT GAME ROOM



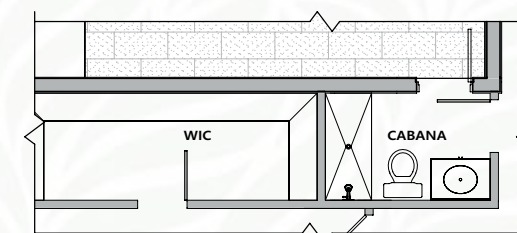
SIDE DOORS AT GARAGE 1



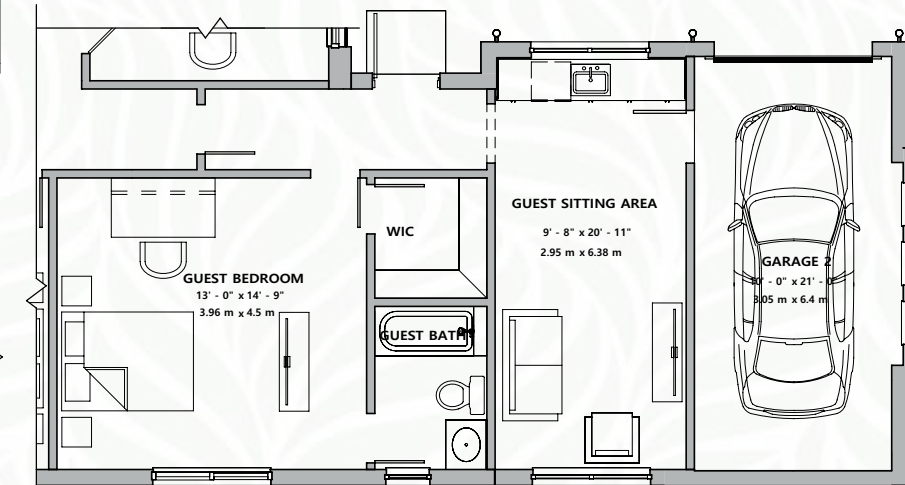
POWDER AT GAME ROOM



SIDE DOOR AT GARAGE 2



CABANA BATH ILO POWDER



GUEST BEDROOM



LONGINES OPTIONS

*Artist's conception and for the convenience of reference. All dimensions are approximate. Developer reserves the right to change and alter materials, specifications, features, dimensions and designs without notice.
Coastal elevation shown.



DISTINGUISHED

SOUTH FLORIDA LOCATION

Bellaterra is situated in Plantation Acres—a cherished neighborhood within one of South Florida's most coveted cities. Plantation is a place where lush greenery and quiet streets create the perfect backdrop for your dream home. Just minutes from Fort Lauderdale and an easy drive to Miami, Plantation offers the best of both worlds: peaceful living paired with exceptional accessibility to vibrant area attractions and business centers.

Top-rated schools, beautiful parks, everyday conveniences and unmatched entertainment are just beyond your doorstep in Bellaterra. Shop and dine at the Sawgrass Mills mall, play 18 holes at Plantation Preserve Golf Course, experience the electrifying atmosphere of Amerant Bank Arena during an NHL hockey game or concert, and have a family outing at the Davie Rodeo. Here in western Broward County, there's so much to enjoy and discover.

SCHOOLS

Central Park Elementary School
Plantation Middle School
Plantation High School

American Heritage School
Parkway Christian School
NSU University School
Sagemont Preparatory School
St. Thomas Aquinas High School
Posnack Jewish Day School
Pine Crest School



INTIMATE ENCLAVE EIGHT ACRE ESTATES

*Artist's conception and for the convenience of reference. All dimensions are approximate. Developer reserves the right to change and alter materials, specifications, features, dimensions and designs without notice. Dimensions of each homesite vary, see builder for specific details.